

Tulane Urology

Renal Cell Carcinoma: Comprehensive Care for Complex Cases - From Nephron Sparing Robotic Partial Nephrectomy to Robotic Resection of IVC Thrombus Resection

A new frontier for treatment and management of Advanced renal cell carcinoma has been reached when Tulane Urology performed the first Robotic Resection of a Level II Inferior Vena Caval Thrombus, infrahepatic earlier last year. Dr. Benjamin Lee, Professor of Urology & Oncology presented the work at the World Congress of Endourology meeting in Istanbul, Turkey on September 7, 2012. "The challenge of opening the IVC to extract the tumor thrombus was overcome by fashioning a vessel loop as a Rommel tourniquet in order to cinch down and control bleeding," says Dr. Lee. The vena cava above the thrombus was controlled with a laparoscopic Satinsky clamp.

Extension of renal cell carcinoma to the level of the Inferior Vena Cava occurs between 4-10% on initial presentation. In this situation, the final pathology was papillary renal cell carcinoma with sarcomatoid change, Fuhrman nuclear grade 3, Stage T3AN0M0. The patient was discharged on post day #2. Risk factors for RCC include obesity, smoking, hypertension and exposure to environmental agents such as asbestos or organic solvents. There are also genetic risk factors such as von Hippel Lindau Syndrome.

While this patient had negative margins, and no evidence of systemic disease, metastatic renal cell carcinoma historically was a very difficult cancer to treat with very few therapeutic options. There has literally been a revolution in the past few years in the management of metastatic RCC with the advent of targeted therapies. The rationale for VEGF (Vascular Endothelial Growth Factor) and mTor inhibitors came about as a result of an understanding of the importance of pathways in pathogenesis of clear cell renal cell carcinoma. Since 2005 there have been 7 drugs which have been studied in clinical trials and approved for advanced RCC. Temsirolimus and Everolimus are mTor inhibitors. Pazopanib, Axitinib, Sorafenib and Sunitinib are tyrosine kinase inhibitors, and Bevacizumab is an antibody to the ligand of VEGF. These new medications also play a role in cytoreductive nephrectomy, where removing the primary tumor in the kidney in the setting of metastatic disease burden may provide a survival benefit.

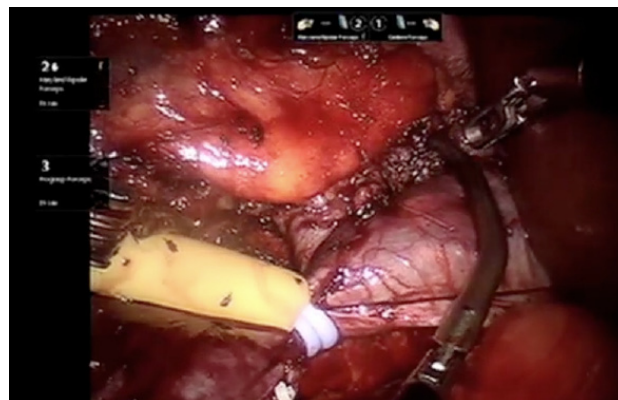


Figure 1. Robotic Resection of Inferior Vena Caval Thrombus. Inferior control is achieved by a vessel loop fashioned into a Rommel tourniquet with a catheter used to cinch down inferiorly, while above the tumor, a laparoscopic Satinsky clamp is used to control the IVC. EBL 200cc. Stage T2aNoMo, patient was discharged on post op day #2.



**Save the Date:
See you for the Next
World Congress of
Endourology!
October 22-26, 2013**



	Count of Approach	Average Age at Surgery	Average Ischemia Time (minutes)	Average Procedure Time (minutes)	Average EBL	Average Length of Stay	Average Largest Dimension of Tumor (cm)
Robotic	204	61.1	19.6	177.8	224.4	2.3	3.2
Partial	193	61.3	19.6	172.6	216.2	2.3	3.2
Radical	11	58.4		251.5	388.3	1.4	4.7
Single Port	2						
Laparoscopic	536	58.5	35.3	170.4	289.6	2.9	4.6
Partial	174	55.2	35.5	168.7	326.6	3.7	2.7
Radical	327	60.1		171.5	268.1	2.4	5.7
Single Port Nephrectomy	10						
Single Port Cryoablation	25						
Open	125	56.7	27.5	232.7	1467.5	5.9	6.9
Partial	37	57.0	27.5	233.3	785.9	4.8	3.7
Radical	88	56.6		230.0	1963.2	6.4	8.5
TOTAL	865	58.9	25.7	178.4	450.8	3.4	4.7

Table 1. Distribution of last 786 kidney surgeries performed at Tulane Medical Center. Included are Robotic Partial Nephrectomy, Single port laparoscopic nephrectomy, Single port cryosurgical ablation.

Tulane Urology at the AUA 2012, Atlanta, GA - May 19-23

AUA Update with Q&A: Core Curriculum, Teaching videos
Elspeth M. McDougall, MD, FRCS, MPH & Benjamin Lee, MD, FACS

CME Symposium: On demand Rx for ED: Putting the patient in the Driver's Seat
Wayne JG Hellstrom

Award winning Videos, Building B in room 406
Moderator: Benjamin R. Lee, MD

Stem Cell Research
Moderated Poster
213: Adipose-Derived Stem Cell-Seeded Small Intestinal Submucosa in Rat Peyronie's Disease Model For Tunica Albuginea Grafting And Reconstruction
Limin Ma, Ege Can Serefoglu, Yijun Yang, Asim B Abdel-Mageed, Suresh C Sikka, Philip J Kadowitz, Louis J Ignarro, Wayne JG Hellstrom

014PG: Complications of Laparoscopic and Robotic Urologic Oncologic and Reconstructive Surgery
Raju Thomas MD, FACS, MHA

Renal Oncology Session
Moderator: Benjamin R. Lee, MD

Renal & Ureter Oncology
Video
V401: Robotic Radical Nephrectomy with Resection of Inferior Vena Cava Thrombus
Benjamin R. Lee, Ashley Bowen, Kush Patel, Jan Colli

Sexual Function/Dysfunction/Andrology: Basic Research I
Moderated Poster
808: Lifelong premature ejaculation and monosymptomatic enuresis: The relationship of these two conditions provides a new perspective
Ahmet Gokce, Oguz Ekmekcioglu, Wayne JG Hellstrom

Sexual Function/Dysfunction/Andrology: Basic Research I
Moderated Poster
810: SILODOSIN (KMD-3213) IS A LONG-ACTING α -1A ADRENOCEPTOR ANTAGONIST WITH ACTIVITY IN THE HUMAN CORPUS CAVERNOSUM
Serap Gur, Ege Can Serefoglu, Cetin Volkan Oztekin, Utku Lokman, Ozge Un, Cevdet Serkan Gokkaya, Philip J Kadowitz, Wayne JG Hellstrom

Oncology (TCC & Adrenal) & Teaching Techniques
Video
V865: Right Robotic Adrenalectomy for greater than 5 cm adrenal mass
Katherine Cotter, Mathew Oommen, Jan Colli, Benjamin R. Lee

Technology & Instruments: Laparoscopy - Malignant Disease
Podium
846: Intrarenal pressures remain low with placement of a dual lumen catheter for retrograde irrigation to induce renal hypothermia.
Janet Colli, Phillip Dorsey, Gregory Mitchell, Benjamin R. Lee

IC/PG Course
047IC: Testosterone: Diagnosis and Management of the Hypogonadal Male: 2012 Update
Wayne John G. Hellstrom, MD

Kidney Cancer: Localized I
Moderated Poster
1102: Clamping Renal Artery alone produces quicker Oxygen saturation recovery compared to Clamping renal artery and vein together: Assessment of Renal Ischemia using Infrared Tissue Oximetry
Janet Colli, Phillip Dorsey, Niels Johnsen, Gregory Mitchell, Ted Klein, Leah Grossman, Benjamin R. Lee

Kidney Cancer: Localized I
Moderated Poster
1109: Measuring the Protective Effect of Allopurinol using Isoprostane after Renal Ischemia in an Animal Model
Christopher Keel, Zijun Wang, Janet Colli, Benjamin R. Lee

Sexual Function/Dysfunction/Andrology: Evaluation II
Moderator Wayne JG Hellstrom

Sexual Function/Dysfunction/Andrology: Evaluation II Podium
1380: Long-Term Infection Outcomes After Hydrophilic Coated Inflatable Penile Prosthesis Implants: 11 Years of Follow-up
Ege Can Serefoglu, Sree Harsha Mandava, Ahmet Gokce, Wayne JG Hellstrom

Technology & Instruments: Surgical Education & Skills Assessment/Ureteroscopy II
Moderator: Benjamin R. Lee, MD

Sexual Function/Dysfunction/Andrology: Medical and Non-Surgical Therapy
Moderated Poster
Vivus, Inc
1480: "ONSET OF ACTION AND TIME TO EFFICACY OF AVANAFIL, A NOVEL, RAPID-ONSET PDE5 INHIBITOR IN MEN WITH MILD TO SEVERE ERECTILE DYSFUNCTION: DATA FROM PHASE 2 AND PHASE 3 CLINICAL TRIALS"
Wayne JG Hellstrom, Matthew T Freier, Ege Can Serefoglu, Ronald W Lewis, Craig A Peterson, Karen DiDonato, Wesley W Day

Georgia World Congress Center: Sidney Marcus Auditorium
Infertility, Sexual Dysfunction, Trauma & Teaching Techniques
Video
V1556: Robot assisted bilateral vasoeppidymostomy: evolution of robotic microsurgical techniques for complex reconstruction of male genital tract
Ahmet Gokce, Julie Wang, Mathew Oommen, Sijo Parekattil, Wayne Hellstrom

Prostate Cancer: Localized VIII (Moderated Poster)
Raju Thomas

Sexual Function/Dysfunction/Andrology: Peyronie's Disease/Surgical Therapy I
Podium
Auxilium Pharmaceuticals, Inc.
1690: PHASE 3 STUDY OF CCH IN PATIENTS WITH PEYRONIE'S DISEASE: DEVELOPMENT AND VALIDATION OF THE PEYRONIE'S DISEASE QUESTIONNAIRE (PDQ)
Wayne JG Hellstrom, Robert Feldman, Ted Smith, Greg Kaufman, James Tursi

10:30 AM-12:30 PM
Georgia World Congress Center: B315-316
Sexual Function/Dysfunction/Andrology: Peyronie's Disease/Surgical Therapy I
Podium
1697: The direction and severity of penile curvature does not have an impact on concomitant Erectile Dysfunction in patients with Peyronie's Disease
Ege Can Serefoglu, Suresh Sikka, Wayne JG Hellstrom

11:15 - 11:30 PM
State-of-the-Art Lecture Penile Reconstructive Surgery for Peyronie's Disease: Tricks of the Trade
Presenter: Wayne John G. Hellstrom, MD, FACS

1:00 PM-3:00 PM
Georgia World Congress Center: Sidney Marcus Auditorium
Oncology, Bladder Oncology
Video
V1886: Robot Assisted Partial Cystectomy for Urothelial Cancer within a Bladder Diverticulum
Rosa Park, Mathew Oommen, Benjamin Lee

6:00-8:00PM
Tulane Alumni Reception, Chestnut Room, Omni @ CNN Center

Single Port Surgery
Video
V2149: RETROGRADE RENAL HYPOTHERMIA TECHNIQUE: ROBOTIC PARTIAL NEPHRECTOMY IN A SOLITARY KIDNEY
Philip Dorsey, Jan Colli, Benjamin R. Lee

Sexual Function/Dysfunction/Andrology: Peyronie's Disease/Surgical Therapy I
Podium
1697: The direction and severity of penile curvature does not have an impact on concomitant Erectile Dysfunction in patients with Peyronie's Disease
Ege Can Serefoglu, Suresh Sikka, Wayne JG Hellstrom

State-of-the-Art Lecture Penile Reconstructive Surgery for Peyronie's Disease: Tricks of the Trade
Presenter: Wayne John G. Hellstrom, MD, FACS

Oncology, Bladder Oncology
Video
V1886: Robot Assisted Partial Cystectomy for Urothelial Cancer within a Bladder Diverticulum
Rosa Park, Mathew Oommen, Benjamin Lee

Single Port Surgery
Video
V2149: RETROGRADE RENAL HYPOTHERMIA TECHNIQUE: ROBOTIC PARTIAL NEPHRECTOMY IN A SOLITARY KIDNEY
Philip Dorsey, Jan Colli, Benjamin R. Lee

Active Clinical Trials at Tulane Urology

The Association between Prenatal Testosterone and Prostate Cancer Risk Using an Anthropometric Marker Derived from Measuring the Lengths of the Fingers, the Ratio of Index-Finger Length to Ring-Finger Length (2D:4D)

A Phase III, Randomized, Double-Blind, Multicenter Trial Comparing Orteronel (TAK-700) Plus Prednisone with Placebo plus Prednisone in Patients with Chemotherapy-Naïve Metastatic Castration-Resistant Prostate Cancer

A Phase 3, Randomized, Double-Blind, Multicenter Trial Comparing Orteronel (TAK-700) Plus Prednisone with Placebo plus Prednisone in Patients with Metastatic Castration-Resistant Prostate Cancer That Has Progressed During or Following Docetaxel-based Therapy

A Registry of Sipuleucel-T Therapy in Men with Advanced Prostate Cancer

A Multicenter, Open-Label, Single-Arm Phase III Study of Abiraterone Acetate Plus Prednisone in Subjects with Advanced Prostate Cancer without Radiographic Evidence of Metastatic Disease

Docetaxel (Taxotere®) plus 6-Month Androgen Suppression and Radiation Therapy vs. 6-Month Androgen Suppression and Radiation Therapy for Patients with High-Risk Localized or Locally Advanced Prostate Cancer: A Randomized Controlled Trial

Randomized, Open Label, Multi-Center Study comparing Cabazitaxel at 25 mg/m² and at 20 mg/m² in Combination with Prednisone Every 3 Weeks to Docetaxel in Combination with Prednisone in Patients with Metastatic Castration Resistant Prostate Cancer not Pre-treated with Chemotherapy

Radium-223 Chloride (Alpharadin) in Castration-Resistant (Hormone-Refractory) Prostate Cancer Patients with Bone Metastasis

Randomized, Open Label Multi-Center Study Comparing Cabazitaxel at 20 mg/m² and at 25 mg/m² Every 3 Weeks in

Combination with Prednisone for the Treatment of Metastatic Castration Resistant Prostate Cancer Previously Treated With a Docetaxel-Containing Regimen

A Phase 3, Randomized, Double-blind, Controlled Trial of Cabozantinib (XL184) vs. Mitoxantrone plus Prednisone in Men with Previously Treated Symptomatic Castration-Resistant Prostate Cancer

A Randomized Discontinuation Study of XL 184 in Subjects with Advanced Solid Tumors

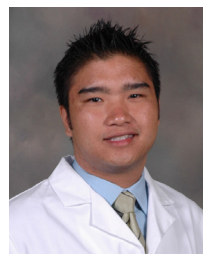
A Phase 3, Randomized, Double-blind, Placebo-Controlled Study of Abiraterone Acetate (CB7630) Plus Prednisone in Symptomatic or Mildly Symptomatic Patients with Metastatic Castration-Resistant Prostate Cancer

Algeta: A Study of Alpharadin in Men with Bone Metastases from Prostate Cancer

Tulane Urology Welcomes New Residents

Tulane Urology would like to recognize the addition of two new residents to the department, Aaron Boonjindasup, MD and Katie Powers, MD.

Both Dr. Boonjindasup and Dr. Powers are graduates of Tulane University School of Medicine.



New Research Fellow Joins Tulane Urology - Liang Wang, MD

Dr. Liang Wang from Union Hospital in Wuhan, China has joined Tulane Urology to work with Dr. Benjamin Lee in the laboratory focusing on new techniques of Quantitating Renal Ischemia, using a marker called Isoprostane. This work won 1st place in the Montague Boyd Essay Contest earlier this year.



Graduate Spotlight

Ash Bowen, MD



A native of Oklahoma, Dr. Bowen received his undergraduate degree from Oklahoma State and graduated from Tulane School of Medicine before joining the residency program at Tulane Urology.

Dr. Bowen will join the University of Oklahoma as Assistant Professor.

Jan Colli, MD, FACS



Dr. Jan Colli received her MD from West Virginia University, completed urologic residency at West Virginia University in Morgantown, urologic oncology fellowship at University of Washington in Seattle.

Dr Colli will soon join the University of Tennessee – Memphis as Associate Professor.

Fundamentals of Basic Laparoscopy: Skills Assessment, Simulation, and Safety October 19 – 20, 2012

New Orleans, LA

Course Director

Benjamin R. Lee, MD

Course Faculty

Jay T. Bishoff, MD; Janet Colli, MD; Matthew Gettman, MD;

Li-Ming Su, MD; and Raju Thomas, MD

Course Description

This course is designed for urologists interested in acquiring or expanding their skills in laparoscopic surgery. Didactic presentations will cover indications, contraindications, patient selection, preparation and positioning for surgery. Lectures and video presentations will detail operating room (OR) setup, instrumentation and step-by-step surgical techniques for performing radical nephrectomy, partial nephrectomy and nephroureterectomy. In addition, reconstructive procedures such as pyeloplasty, and newer technologies such as Single port Laparoscopy will be covered. Participants will have hands-on experience in a supervised animate laboratory practicum.

Credit Designation

The American Urological Association designates this live activity for a maximum of 13.25 AMA PRA Category 1 Credit(s)[™]. Physicians should claim only the credit commensurate with the extent of their participation in the activity. The AUAER takes responsibility for the content, quality and scientific integrity of its CME activities.

Hotel Information

Hyatt Regency French Quarter Hotel

800 Iberville Street

New Orleans, LA 70112

Rate: \$179 single/double occupancy. Reference the American Urological Association when making your reservation to receive special group rate. Once the AUA room block is full, which may be prior to the hotel cutoff date, that AUA is unable to guarantee rooms at this rate or hotel.

Hotel Cut-off Date: Thursday, September 27, 2012.

Reservations: 888-404-6875

Cancellation Policy

An administrative fee is assessed if registration is cancelled up to six weeks prior to the course. Through September 7, 2012 the cancellation fee for the full course is \$400 and \$50 for the didactic course. From September 7, 2012 to September 21, 2012, the cancellation fee is 50% of the registration fee paid. No registration fees will be refunded after September 21, 2012. The AUA has the right to cancel the course if a maximum enrollment is not reached. If the AUA cancels this course, registration fees will be refunded in full and notification will be sent.

For additional details including registration fees and a complete program schedule, please visit www.auanet.org/BLAP2012.

Fundamentals of Basic Laparoscopy Scientific Program Schedule

Friday, October 19, 2012

8:30 – 9 a.m. Registration and Breakfast

Didactic 1: Refining the Laparoscopic Knowledge Base

9 – 9:10 a.m. Introduction and Goals - Benjamin R. Lee, MD

9:10 – 9:20 a.m. Introduction to Tulane Surgical Simulation Center - Jennifer Calaza

9:20 – 9:35 a.m. Creation of Pneumoperitoneum and Safe Trocar Placement - Janet Colli, MD

9:35 – 9:55 a.m. Laparoscopic Nephrectomy: Tips and Tricks™ Transperitoneal Technique - Benjamin R. Lee, MD

9:55 – 10:15 a.m. Laparoscopic Nephrectomy: Retroperitoneal Approach - Li-Ming Su, MD

10:15 – 10:30 a.m. Laparoscopic Cyst Decortication: Indications & Bosniak Classification - Li-Ming Su, MD

10:30 – 10:45 a.m. Laparoscopic Suturing - Jay T. Bishoff, MD

10:45 – 11:05 a.m. Laparoscopic Pyeloplasty: Step by Step Approach - Raju Thomas, MD

11:05 – 11:25 a.m. Laparoscopic Partial Nephrectomy - Benjamin R. Lee, MD

11:25 – 11:40 a.m. Laparoscopic Nephroureterectomy: Resecting the Bladder Cuff - Matthew Gettman, MD

11:40 – 11:55 a.m. Laparoscopic Ultrasound - Jay T. Bishoff, MD

11:55 a.m. – 12:15 p.m. Laparoscopic Single Port Surgery: Getting Started, Access, & Equipment - Matthew Gettman, MD

12:15 – 12:25 p.m. Exiting the Abdomen - Janet Colli, MD

12:25 – 12:30 p.m. Q & A

12:30 – 1:15 p.m. Lunch

Interactive 1: Cognitive and Physical Skills Assessment

1:15 – 3:15 p.m. Skills and Suturing Stations - Jay T. Bishoff, MD; Matthew Gettman, MD; Janet Colli, MD; Raju Thomas, MD; Li-Ming Su, MD; Benjamin R. Lee, MD

3:15 – 4:45 p.m. Virtual Reality Surgical Simulation Stations

Saturday, October 20, 2012

7:30 – 8 a.m. Breakfast

8 – 11:30 a.m.

Group 1

Hands-on Animal Laparoscopic Training

Laparoscopic Pyeloplasty

Laparoscopic Partial Nephrectomy

Bilateral Laparoscopic Radical Nephrectomy

Group 2

Complications of Laparoscopic Surgery: Prevention and Management

Video Case Discussion

Complex Cases – Course attendees are welcome to bring films to discuss.

11:30 a.m. – 12:30 p.m. Lunch

12:30 – 4 p.m.

Group 1

Complications of Laparoscopic Surgery:

Prevention and Management

Video Case Discussion

Complex Cases – Course attendees are welcome to bring films to discuss.

Group 2

Hands-on Animal Laparoscopic Training

Laparoscopic Pyeloplasty

Laparoscopic Partial Nephrectomy

Bilateral Laparoscopic Radical Nephrectomy

4 – 5 p.m. Feedback Sessions & Post-Course Questionnaire